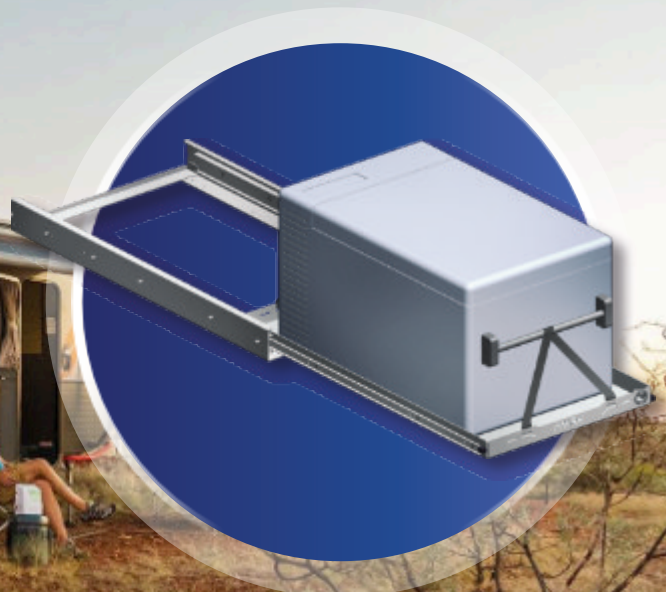
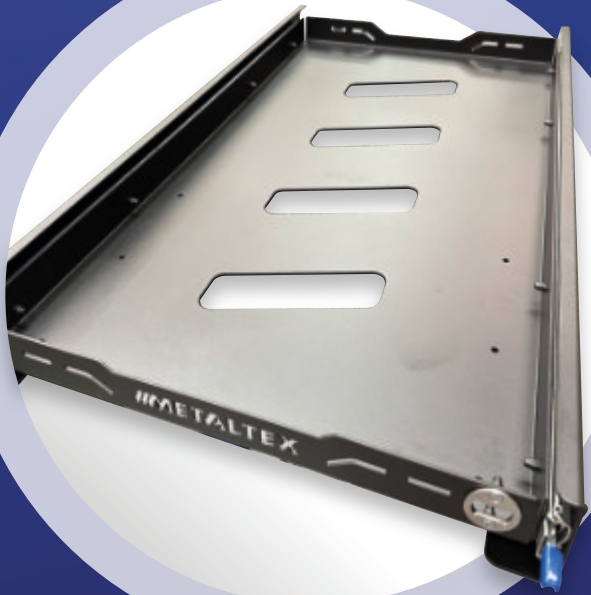


Features

- ✓ 3mm Alum construction.
- ✓ Slide can be interchangeable and can be upgraded if need be.
- ✓ Stainless bottle opener incorporated into the front right-hand side of the slide.
- ✓ Powder coated in a durable Textura black finish.
- ✓ Light weight.
- ✓ Black fasteners.
- ✓ Ergonomic tie down points, reducing wear on cargo straps.
- ✓ Australian designed and manufactured.
- ✓ Can accommodate up to a 60L fridge.
- ✓ Dust cover on draw slides.
- ✓ Available in 125kg and 227kg variants.
- ✓ Overall size: 1074L x 602W x 90.



Australian Made

WWW.METALTEX.COM.AU